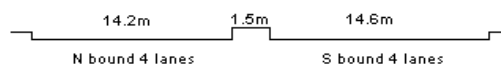
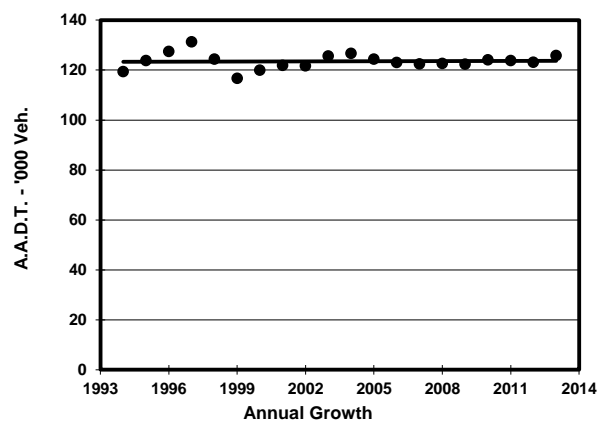
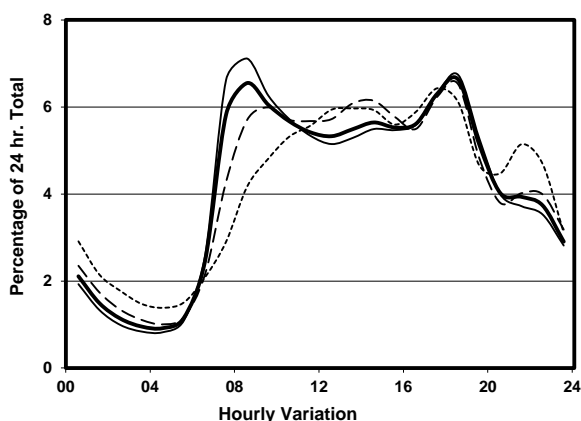
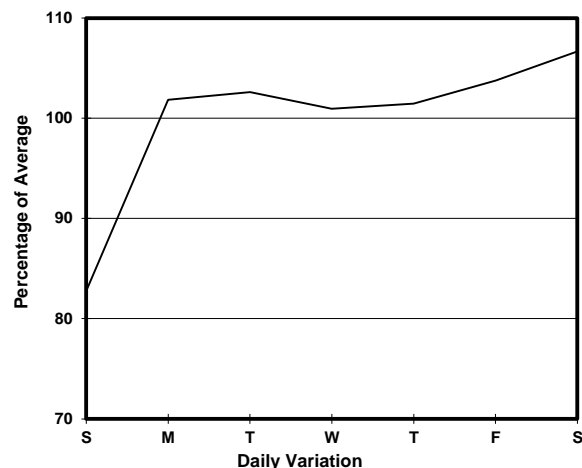
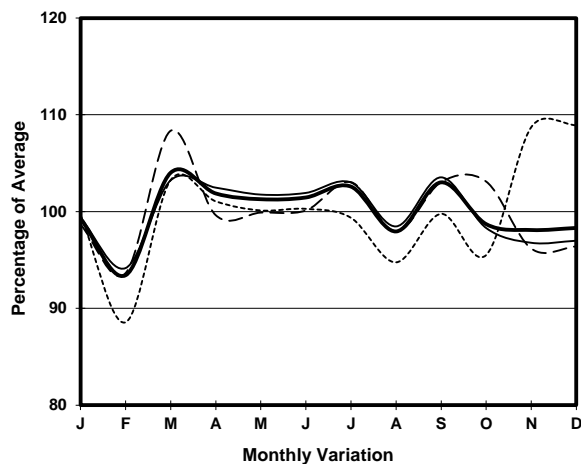


YEAR 2013
CORE STATION 5013
ROAD NETWORK MAJOR
ROAD TYPE EXPRESSWAY

LINK TOLO HIGHWAY (from NORTH OF MA LIU SHUI INT to YUEN SHIN RD INT)



1. TRAFFIC FLOW VARIATION AND GROWTH



2. TRAFFIC CHARACTERISTICS (BY DIRECTION)

| Parameter | All - Day | Mon. - Fri. | Sat. | Sun. |
|--------------------------------------|-----------|-------------|-----------|-----------|
| SOUTH BOUND | | | | |
| A.A.D.T. | 65930 | 68190 | 69990 | 54870 |
| R 12 / 24 - % | 73.1 | 74.3 | 71.7 | 67.1 |
| R 16 / 24 - % | 87.4 | 88 | 86.4 | 84.7 |
| AM Peak Hour | 0800-0900 | 0700-0800 | 0800-0900 | 0900-1000 |
| One-way flow at AM peak hour | 4750 | 5690 | 4750 | 2750 |
| T - % (AM) | - | 15.6 | - | - |
| PM Peak Hour | 1800-1900 | 1800-1900 | 1800-1900 | 1700-1800 |
| One-way flow at PM peak hour | 4230 | 4380 | 4400 | 3580 |
| T - % (PM) | - | 12.7 | - | - |
| Prop.of commercial vehicles - 16 hr. | - | 17.5 | - | - |
| NORTH BOUND | | | | |
| A.A.D.T. | 59880 | 61540 | 65220 | 50070 |
| R 12 / 24 - % | 66.8 | 67.5 | 66.8 | 62 |
| R 16 / 24 - % | 86.3 | 87.1 | 85.5 | 82.4 |
| AM Peak Hour | 0800-0900 | 0800-0900 | 0900-1000 | 0900-1000 |
| One-way flow at AM peak hour | 3490 | 3930 | 3410 | 2300 |
| T - % (AM) | - | 15.6 | - | - |
| PM Peak Hour | 1800-1900 | 1800-1900 | 1800-1900 | 1700-1800 |
| One-way flow at PM peak hour | 4120 | 4360 | 4420 | 3170 |
| T - % (PM) | - | 11.6 | - | - |
| Prop.of commercial vehicles - 16 hr. | - | 16.4 | - | - |

3. OTHER INFORMATION AND COMMENT

4. Vehicle classification and occupancy - Monday to Friday

| Time | | Class of vehicle | | | | | | | | | |
|------------------------|-----|------------------|----------------|------|---------------|------|------------|-------|----------------|---------|------|
| | | Motor Cycle | Private Car | Taxi | Private LB | PLB | Goods veh. | | Non Fr. Bus | Fr. Bus | |
| | | | | | | | Light | M & H | | SD | DD |
| 0700-0800 | Pro | 3.4 | 47.3 | 8.9 | 1.1 | 0.4 | 21.3 | 11.7 | 3.5 | 0.1 | 2.5 |
| | Ocp | 1.0 | 1.2 | 2.0 | 2.3 | 11.3 | 1.5 | 1.1 | 9.6 | 1.0 | 69.4 |
| 0800-0900 Peak hour | Pro | 1.5 | 58.4 | 6.6 | 0.5 | 0.2 | 19.6 | 8.3 | 3.0 | 0.0 | 1.9 |
| | Ocp | 1.1 | 1.4 | 2.1 | 2.4 | 13.0 | 1.5 | 1.2 | 13.4 | 0.0 | 67.2 |
| 0900-1000 | Pro | 1.5 | 46.5 | 9.4 | 0.9 | 0.4 | 24.1 | 12.1 | 3.2 | 0.0 | 2.1 |
| | Ocp | 1.0 | 1.2 | 1.8 | 2.5 | 10.1 | 1.4 | 1.2 | 6.8 | 0.0 | 34.3 |
| 1000-1100 | Pro | 0.8 | 43.2 | 6.8 | 0.5 | 0.3 | 27.2 | 16.4 | 2.8 | 0.0 | 1.9 |
| | Ocp | 1.2 | 1.3 | 2.0 | 2.8 | 12.0 | 1.3 | 1.2 | 8.7 | 0.0 | 31.3 |
| 1100-1200 | Pro | 0.8 | 42.9 | 5.9 | 0.9 | 0.4 | 26.5 | 17.3 | 3.5 | 0.1 | 1.9 |
| | Ocp | 1.0 | 1.4 | 2.1 | 1.9 | 8.8 | 1.5 | 1.3 | 11.8 | 1.0 | 30.6 |
| 1200-1300 | Pro | 1.1 | 44.5 | 6.9 | 0.6 | 0.3 | 25.6 | 16.1 | 2.8 | 0.1 | 1.9 |
| | Ocp | 1.1 | 1.4 | 1.8 | 2.3 | 3.2 | 1.5 | 1.2 | 13.0 | 1.0 | 27.4 |
| 1300-1400 | Pro | 0.7 | 44.6 | 6.7 | 0.3 | 0.4 | 23.9 | 18.2 | 3.1 | 0.1 | 2.0 |
| | Ocp | 1.0 | 1.4 | 2.3 | 3.8 | 7.0 | 1.4 | 1.2 | 10.9 | 1.0 | 34.4 |
| 1400-1500 | Pro | 1.4 | 40.4 | 5.6 | 1.1 | 0.4 | 29.0 | 17.8 | 2.6 | 0.0 | 1.7 |
| | Ocp | 1.0 | 1.3 | 2.0 | 2.2 | 4.4 | 1.4 | 1.3 | 10.6 | 0.0 | 29.3 |
| 1500-1600 | Pro | 0.7 | 44.8 | 5.4 | 0.6 | 0.5 | 27.4 | 16.6 | 2.1 | 0.0 | 2.0 |
| | Ocp | 1.0 | 1.3 | 2.1 | 2.7 | 7.8 | 1.5 | 1.2 | 16.6 | 0.0 | 27.8 |
| 1600-1700 | Pro | 1.4 | 43.8 | 6.7 | 1.2 | 0.3 | 29.1 | 13.4 | 1.9 | 0.0 | 2.2 |
| | Ocp | 1.1 | 1.5 | 1.8 | 3.4 | 5.3 | 1.5 | 1.1 | 6.0 | 0.0 | 32.4 |
| 1700-1800 | Pro | 2.3 | 48.4 | 7.0 | 1.1 | 0.4 | 23.5 | 12.6 | 2.3 | 0.1 | 2.5 |
| | Ocp | 1.1 | 1.7 | 1.9 | 2.0 | 11.5 | 1.6 | 1.2 | 10.1 | 1.0 | 47.1 |
| 1800-1900 | Pro | 2.3 | 63.9 | 5.2 | 0.4 | 0.3 | 15.8 | 8.1 | 2.2 | 0.0 | 1.8 |
| | Ocp | 1.1 | 1.4 | 2.0 | 1.8 | 14.3 | 1.4 | 1.1 | 19.0 | 0.0 | 64.2 |
| 1900-2000 | Pro | 1.5 | 67.1 | 6.3 | 0.1 | 0.3 | 12.4 | 7.9 | 2.3 | 0.0 | 2.2 |
| | Ocp | 1.1 | 1.4 | 1.9 | 2.0 | 12.0 | 1.3 | 1.2 | 11.4 | 0.0 | 60.5 |
| 2000-2100 | Pro | 1.0 | 65.7 | 9.1 | 0.2 | 0.7 | 11.3 | 8.1 | 1.7 | 0.0 | 2.3 |
| | Ocp | 1.0 | 1.3 | 1.9 | 1.5 | 10.1 | 1.3 | 1.1 | 9.6 | 0.0 | 47.6 |
| 2100-2200 | Pro | 1.5 | 62.2 | 12.1 | 0.0 | 0.5 | 12.1 | 7.6 | 1.4 | 0.0 | 2.7 |
| | Ocp | 1.1 | 1.3 | 1.9 | 0.0 | 7.2 | 1.2 | 1.0 | 9.1 | 0.0 | 38.0 |
| 2200-2300 | Pro | 1.6 | 64.3 | 16.4 | 0.3 | 0.5 | 8.4 | 4.6 | 0.9 | 0.0 | 2.9 |
| | Ocp | 1.1 | 1.3 | 1.9 | 1.7 | 10.7 | 1.4 | 1.1 | 8.2 | 0.0 | 34.7 |
| 16 hours | Pro | 1.5 | 51.6 | 7.5 | 0.6 | 0.4 | 21.5 | 12.3 | 2.5 | 0.1 | 2.1 |
| | Ocp | 1.1 | 1.4 | 2.0 | 2.4 | 9.3 | 1.4 | 1.2 | 11.2 | 1.0 | 43.9 |

Legend

- Pro.** Proportion of vehicles in % (Sum may not add up to 100% due to figure rounding)
- Ocp.** Average occupancy of vehicles
- M&H** Medium and Heavy